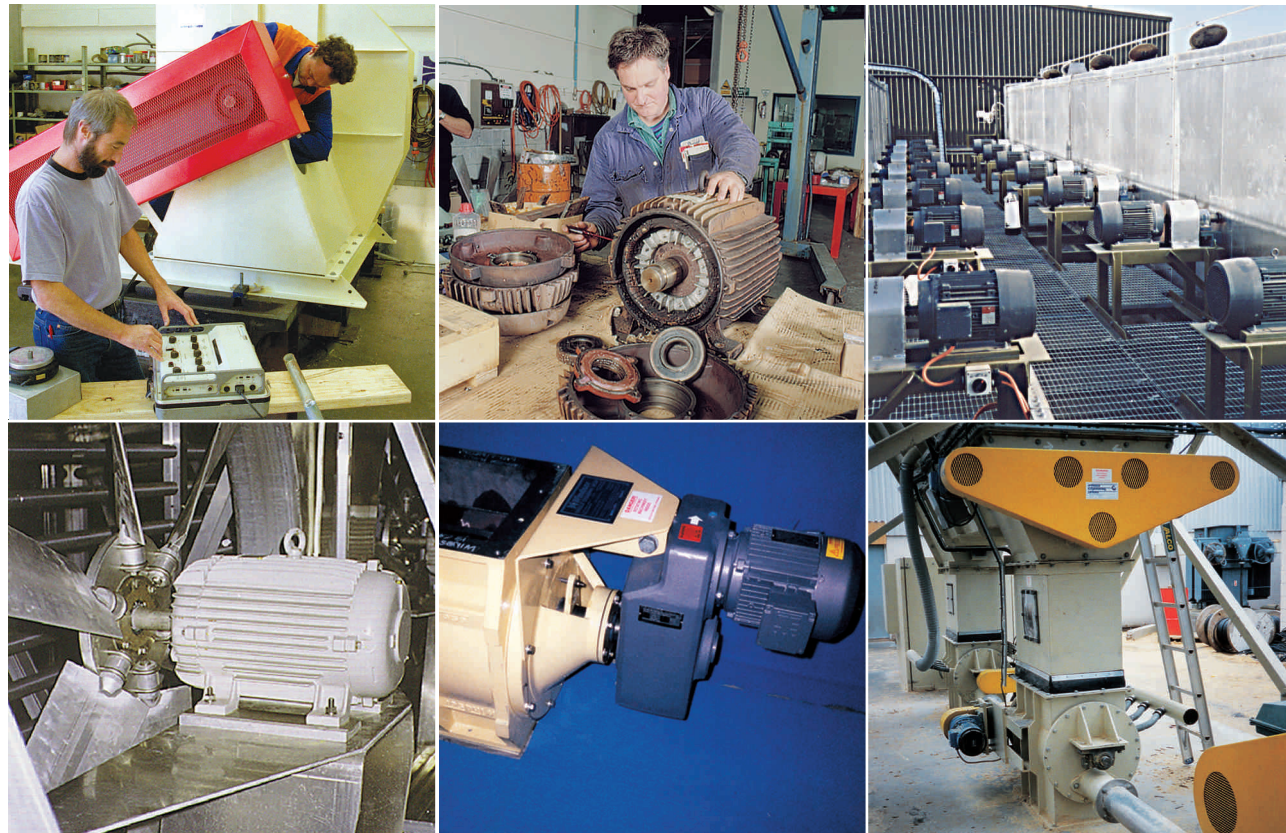




Setting the standards

PROFESSIONAL SERVICE AND MAINTENANCE



'Quality Servicing is the key to consistent cost effective operation'



Brent Morris

Rob Hughes



Pulsejet filters and conveying systems

Windsor have for many years been major suppliers of capital equipment such as kilns, dust collectors, fans and blowers to a variety of industries.

This equipment needs to be serviced, maintained or repaired from time to time. Windsor offers a comprehensive professional service to our clients for service, maintenance and breakdown assistance.

Quick response or managed maintenance?

We respond promptly to requests for assistance and will provide an efficient repair service (subject to availability of parts) on all Windsor equipment and on most other makes too.

We are able to offer and develop a regular inspection and maintenance agreement specially tailored to suit client/customer requirements providing continued efficiency of plant.

Scope

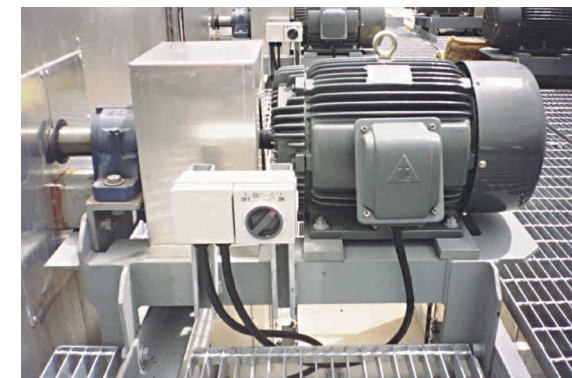
We offer a considerable depth of specialist engineering experience including:

- Qualified technicians
- Portable single and two plane balancing machines for on-site fan balancing
- Vibration analysers
- Full airflow and pressure testing equipment
- Industrial filter servicing including sock laundering
- Industrial blower servicing and repairs
- Bearing changes for fans and electric motors

These services are backed by the resources of the Windsor Engineering Group and their extensive workshop facilities with many qualified technicians and specialist engineers.



The Service Team



Maintenance and repair of electric motors and drive systems



www.windsor.co.nz

Windsor Engineering Group Ltd.
PO Box 13 348, Johnsonville
Wellington, New Zealand
Tel: +64 4 232 8080
Fax: +64 4 232 5929
email: sales@windsor.co.nz

Windsor Central NI
Private Bag 1902, Taupo
New Zealand
Tel: +64 7 376 5310
Fax: +64 7 376 5309
email: taupo@windsor.co.nz